

APRIL 3, 4, 5 & 6 | 2026

# EASTBOURNE ARTISTS

## OPEN HOUSES & STUDIOS

...take a peek inside the world of Eastbourne's artists and makers as they open their doors to the public once again this Easter weekend.

## Welcome to the 2026 Eastbourne SPRING Open Houses

Established in 2008 to celebrate the opening of the new Towner gallery, Eastbourne's artists and makers have been opening their homes and studios to the public twice a year ever since. If you're new to the "open house" concept, it's a unique opportunity to step inside working studios, meet the artists, and buy original artwork directly from the artists. From paintings and photography to ceramics, jewellery and other handcrafted pieces, you'll discover work you simply won't find anywhere else. Use the black numbered dots to identify the venues you'd like to visit on the maps and be sure to check opening times carefully. Most venues are open across all 4 days of the Easter weekend, but some participate for just one or two days so please check and plan your visit accordingly. Many artists now accept card payments, and PayPal or direct bank transfer are also widely welcomed should you find something you'd love to take home. The majority of venues are located in Old Town, the Town Centre, Meads, Seaside, Hampden Park and Lower Willingdon. We hope you enjoy your creative trip around the town.

Whilst every effort is made to ensure that all information in this booklet is correct, responsibility cannot be taken for any errors or omissions. Individual artists and studios are responsible for all displays, sales etc. at their own venues. The publishers of this publication have no responsibility in the artists' venues. All queries, please call 07768 387980

Cover image: Elsie Frida - section of larger painting, Venue 13

[www.eastbourneartists.com](http://www.eastbourneartists.com)



Copies of this brochure are available from the following locations:

**Waterstones**  
Terminus  
Precinct  
BN21 3AJ

**Towner**  
College Rd  
BN21 4JJ

**Welcome Centre**  
Devonshire  
Quarter  
BN21 4BP

**Lighthouse Gallery**  
Cornfield  
Terrace  
BN21 4NS

**Big Art**  
Lismore Rd  
BN21 3BA

**Planahead**  
Commercial  
Mews South  
BN21 3XF

**Enterprise Centre**  
Station Parade  
BN21 1BD

As well as with all participating artists and a number of venues such as cafes, pubs and shops around the town.



### David Rice

23 Parsonage Road, BN21 1JF  
www.davidriceart.com instagram: @paintingsfromdavid

Award-winning painter and art director, showing original paintings, prints and cards of Sussex and London. Also including new work inspired by an 800km walk across Spain on the Camino de Santiago.

Open every day 10am-4pm.

1



### Rachel Jane-Holmes, Ede-Smith & Friends

7 Peppercombe Rd,  
Old Town, BN20 8JH

A really wonderful, exciting & diverse collection of original paintings, prints, ceramics, jewellery and hand-made books.

### Instagram links

[rachel\\_jane\\_holmes.art](#)  
[williamedesmith.artist](#)  
[ees.pottery](#)  
[julianwarrenderjewellery](#)  
[small.yellow.bird](#)  
[pottery\\_by\\_ian](#)

3

Open all 4 days 11-4pm  
Refreshments available



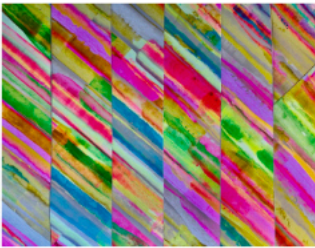
### Vicki Disney

1 Chamberlain Rd BN21 1RU  
www.vickidisney.art

Welcome to my Open Studio - a vibrant space where bold, contemporary paintings meet warmth and texture.

Explore my new vivid collection alongside my signature rust-based works, rich in earthy tones and depth. You'll also find gorgeous soft velvet cushions, curated homewares, handmade cards, and a beautiful selection of crystals and healing bracelets. An inviting blend of art, soul, and contemporary style.

Open all 4 days 11am-4pm



2

### Jon Davies

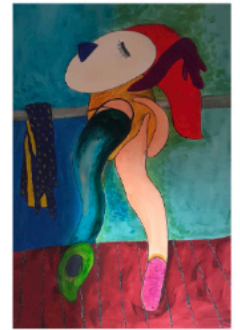
75 Longland Road, Old Town,  
BN20 8JB 07976 218652

daviesjrs65@gmail.com

I create images reflecting significant times and people in my life, as well as carrying out commission-based work.

Open each day from  
Good Friday to Easter Monday (inc)  
from 11am - 4pm each day

4



### Christine Munro, family and friends.

38 Cobbold Avenue, BN21 1UZ

Paintings in various styles, stained glass, greetings cards and refreshments available. Looking forward to welcoming visitors to our friendly house. Supporting the Retired Greyhound Trust.

Open all 4 days 11am - 4pm

5



6

## Penny & Bernie

From our 40 year archive, we are showing many fabric samples for costumes, which we've hand-dyed, printed and painted for ballet, film, musicals & opera productions around the world. Courses available.

A 15 minute TALK at 12.00 & 3.00 each day, will explain some of the different techniques used.

71 Willingdon Road, BN21 1TR pennyhad35@gmail.com

Open all four days 10am - 5pm

**LIFE DRAWING EASTBOURNE**

Weekly life drawing in Eastbourne  
All abilities welcome to our friendly group

**LIFE DRAWING** every Thursday 10.30-12.30 at Old Town community Centre, £10.

**PORTRAIT SESSIONS** every Friday 10.30-12.30 at the Star Inn, - Old Town, £10.

Both sessions are drop in, no tickets required

For further details contact Laura: Tel: 07709 437898  
Email: lifedrawingeb@gmail.com

7

## Julian Sutherland-Beatson

The Studio  
3 Dittons Rd  
BN21 1DN

8

Showing new graphic 'Arrangements' alongside recent semi-abstract landscapes and cityscapes. Four times RA Summer show exhibitor.



Open 11.00 - 4.00 all four days

[www.sutherlandbeatson.com](http://www.sutherlandbeatson.com)

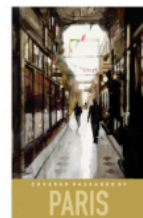
instagram: jsbeatson

A new collection of archive quality 'city' prints based on original paintings from Julian Sutherland-Beatson

The prints reflect the popular travel posters of the 1930s and 40s. Julian has 2 similar paintings in the permanent collection of The House Of Lords in London.

Samples available to view at the open house above or order below.

[sutherlandbeatson.bigcartel.com](http://sutherlandbeatson.bigcartel.com)





# THE EASTBOURNE INTERNATIONAL SINGING COMPETITION

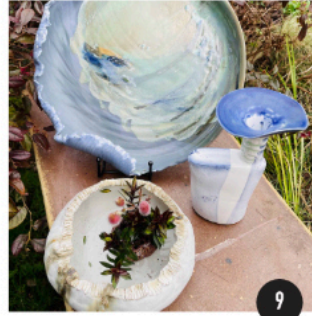
28TH - 31ST MAY, 2026

**COME TO SEE THE OPERA STARS OF TOMORROW**

Over 50 of the world's finest young solo classical singers performing at Eastbourne's Birley Centre, 4 Carlisle Road BN21 4EF



[www.ebisc.co.uk](http://www.ebisc.co.uk)



## Ceramics in the Garage

Tiled House  
Chesterfield Road, BN20 7NT  
naomitimlin@icloud.com

Textured forms, turreted vessels and sea-inspired pieces

Ann Bartlett, Caroline O'Grady and Naomi Timlin

Saturday, Sunday and Monday  
10:00 - 16:00

9

The Lansdowne Hotel  
King Edwards Parade, BN21 4ER

**An eclectic collection of Eastbourne artists on display at Patterson Gallery in The Lansdowne Hotel.**

**Open all 4 days 10am-5pm**

Michaele WynnJones, Hazel Baker, Peter M McNally, Alan D Pearce, Annalyne Cooke, Nick Bowering, Andrew Murdoch, Samantha Tuffnell.

## Patterson Gallery



10

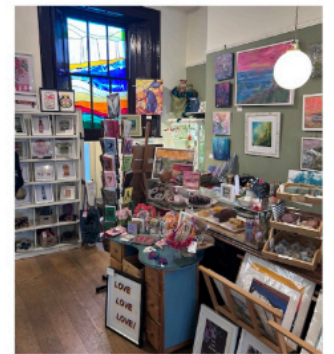


15

**Creative Eastbourne** artists present a collective showcase featuring work by local creatives, celebrating independent practice, collaboration and community across town.

Enterprise Centre, Ground Floor,

3rd, 4th, 5th and 6th April 11am-4pm



## The Lighthouse Gallery

19, Cornfield Terrace, BN21 4NS 07748354879  
Find us on Facebook and Instagram

Discover a treasure trove of local talent at The Lighthouse Gallery on Cornfield Terrace. We proudly represent 25 local artists and makers, incorporating paintings, collages, ceramics, silver jewellery, turned wood, fused glass, textiles, wire work, crochet and more. A lively hub for artists and art lovers, and a great spot for coffee and homemade cake!

Open Easter Friday and Saturday at 10.30am to 4 pm  
and Easter Sunday 1-4pm.

11



### Cafe Joon

12

A group of ten artists will be showing their work at Cafe Joon 12 Pevensey Road. BN21 3HP on **Saturday 4th April from 10 till 4 pm**

Paintings, illustrations, sketches, ceramics, glass and jewellery will be on show to view and buy.

All welcome, and you will be guaranteed a warm welcome and great coffee!



### Mel Evans & Elsie Frida

47 Channel View Road BN22 7LW  
[www.ElsieFridaPainter.com](http://www.ElsieFridaPainter.com)  
[www.MelEvansPainter.com](http://www.MelEvansPainter.com)

Realist oil paintings by Mel Evans, with a new flower series. Semi-abstract land & seascape paintings from Elsie Frida. Cards, prints & snacks available.

Open 11am - 5pm  
Fri 3rd & Sat 4th April only.

13



### Teddy Salad Art

46 Whitley Road, BN22 8NH  
[Teddy.Salad@icloud.com](mailto:Teddy.Salad@icloud.com)  
[teddysalad.com](http://teddysalad.com)  
07597 292206

Welcome to the World of Modern Folk Art. See the working Studio and wide range of past and present works.

Open for all 4 days,  
10.00 am until 17.00 pm

14



### Art at Sicilia Qui

15

The Enterprise Centre  
Station Parade BN21 1BD

Come and visit our coffee lounge and view work by a range of artists including Caia Matheson, Elda Abramson, Carol Berry and others to be confirmed.

Open Friday & Saturday  
10am - 4pm  
and 11am - 3pm on Sunday



### Marcus Cherrill

16

11 Broad Road  
Willington BN20 9QS  
07710 092906  
[info@marcuscherrillart.co.uk](mailto:info@marcuscherrillart.co.uk)

Original contemporary landscape paintings inspired by East Sussex coast and downland, exploring light, balance and a strong sense of place.

Open 10.00am - 4.00pm each day

### Helena Birch and Derek Irving

11 Rosebery Avenue  
Hampden Park BN22 9QA

Portraits, figures and flowers from Helena in a variety of media. Detailed architectural drawings and trees from Derek. Cards available. Refreshments for anyone prepared to trek out here!

Open each day from 11am - 4 pm.

17



### Elda Abramson

You are welcome to view a range of original paintings and prints from Elda Abramson and other artists at Sicilia Qui in the Enterprise Centre (by the station)

Open Friday & Saturday  
10am - 4pm and  
11am - 3pm on Sunday

15

# Winter 2026

If you are interested in participating in the NEXT open house event, it will be the weekends of 14/15 and 21/22 November. You can register your interest at [juliansb100@gmail.com](mailto:juliansb100@gmail.com) or look out for registration in mid September at [www.eastbourneartists.com](http://www.eastbourneartists.com)

