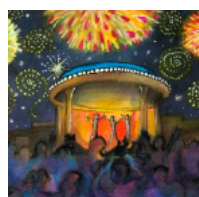
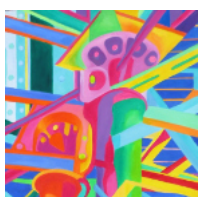
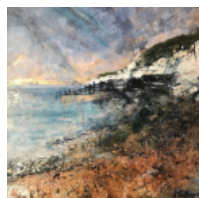
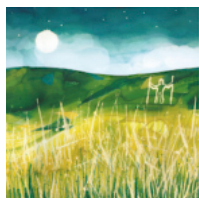
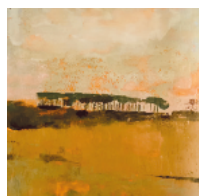
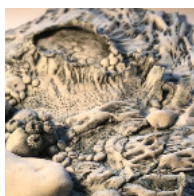
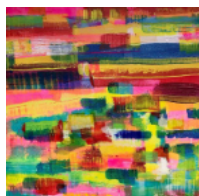


E A S T B O U R N E A R T I S T S

# OPEN HOUSES & STUDIOS

EASTER WEEKEND. APRIL 7, 8, 9 & 10

NEW DATES  
FOR 2023



2023

Over forty artists and makers showing and selling their work from their homes and studios around the town this springtime.

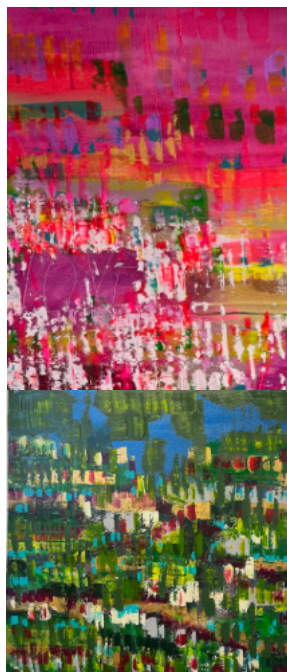
**B**ack in 2008 the artists and makers of our lovely seaside town started to open their homes and studios to celebrate the opening of the new Towner Gallery. This spring we welcome a number of new participants along with the regular stalwarts.

For those of you that have never visited an Open House or studio, well, you're in for a treat! Over the years the artists and makers of Eastbourne have become very good at showing their work to interested visitors. This brochure gives you an overview of the wealth and breadth of artistic talent around the town.

Perhaps you are seeking a painting, print, photograph or drawing for your home. Maybe you can't resist beautiful ceramics, jewellery and textiles? You'll find plenty to take your fancy. On a more practical note, most Open Houses are open for the whole Easter weekend, typically from 11am-4pm but do check details as some open earlier or stay open later. Some open for one day only whilst a couple are actually opening the following weekend too!

As Covid is still with us please be respectful of any suggestions made at particular venues. The circled numbers by each participant relates to the maps at the back of this brochure.

Whilst every effort is made to ensure that all information in this publication is correct, responsibility cannot be taken for any errors or omissions. Individual artists and studios are responsible for all display, sales etc at their own particular venues. The publishers of this publication have no responsibility in the artist's domain. Any queries, please call 07768 387980. Cover images: Large drawing, Lindy Dunbar. Then left to right from the top, line by line. Vicki Disney, Julie Snowball, David Rice, Samantha Tuffnell, Renee Rilexie, Sonya Tatham, Sheena Bourn, Anthony McIntosh, Helen Warren.



## Vicki Disney & friends

1 Chamberlain Road BN21 1RU

vicki\_disney Instagram  
www.vickidisney.art

1

A studio full of colour & beauty with velvet cushions, contemporary art, cards, crystal healing bracelets and jewellery from Vicki Disney, Delightfully Velvet, Akitsu Holistics & Oriana jewellery.

Pop along. We look forward to seeing you. Open all weekend inc. Good Friday & Easter Monday 11am - 4.30pm



## Julie & Karina

2

61 Victoria Drive BN20 8LA

A selection of contemporary mixed media paintings, jewellery, bags, journals & art cards.

Open 8th, 9th & 10th April  
11am till 4pm (Closed Good Friday)

email - juliecaddy@btinternet.com  
www.corina-stupu-thomas@pixels.com



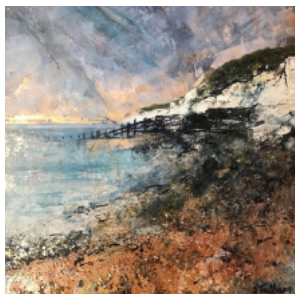
## Grace Powell Films

Eerie, enchanting, eclectic, esoteric, Grace Powell creates a magical world of exquisite characters who have extraordinary adventures where almost anything can happen.

Follow the link below

www.youtube.com/@gracepowellfilms

Please note that these films are not suitable for young children and adult supervision is suggested for older children.



### Cherry Garden Cottage

3

Cherry Garden Rd, Old Town  
BN20 8EY sonyatatham@gmail.com  
07763 407733

Open house showing a range of work by artists:-

**Sonya Tatham** - Paintings

**Jazz the Alchemist** - Fused Glass

**Dizzy Daisy Designs** - Silver Jewellery  
And more!

Open: Preview evening on 7th April  
5pm-9pm

**Sat 8th April 10.30 am - 5 pm only**



### All About The Sea

4

Blue Whale Pottery  
40 Summerdown Rd BN20 8DR

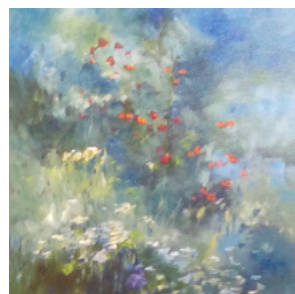
**Ceramics** by Jennie Lathbury,  
Anne Barrell and Gary Edwards

**Paintings** by Anthony Grant

All our work is inspired by the sea;  
shells and seaweed, boats and  
fish, clouds, storms and horizons.

Instagram@bluewhalepottery

Open 7th, 8th, 9th, 10th 11am-5pm



### Christine Munro, Jodi Lock and friends.

5

38 Cobbold Avenue, Old Town,  
BN21 1UZ. munro436@btinternet.com.

Paintings in various styles  
and media, Stained glass by  
Julia Lloyd-Jones, greetings cards,  
refreshments, and a warm welcome.  
Supporting the Retired Greyhound  
Trust.

Open 7th, 8th, 9th and the 15th of  
the following weekend. 11am-5pm



### Art by Hillary Ann

6

11 Gore Park Avenue, BN21 1QB  
santiano@btinternet.com

07475 860866

I am an artist working in oil paint.  
My favourite subjects are people,  
animals, landscapes and  
seascapes.

Open Saturday 8th April only

10am to 5pm Refreshments available.



### Samantha Tuffnell & Jennifer Moore

7

Top Flat, 6 Gore Park Rd, BN21 1TQ

Sam & Jen are delighted to  
display their Sussex-inspired  
paintings, British bird-watching  
logbooks, originals, prints, linocuts  
& cards - all available to buy.

Open: 7/4, 8/4 & 9/4 11-4 pm.  
Closed: 10/4 (Easter Monday)

www.instagram.com/  
samanthatuffnellartist  
www.jennifermooreartist.com



### David Rice & Nina Mooncie

23, Parsonage Road, BN21 1JF

David is showing landscape,  
cityscape and seascape  
paintings. Nina has cards, prints,  
badges, tea towels  
and cushions of her illustrations.

Open all Easter weekend,  
Fri - Mon 11am-4pm

www.davidriceart.com  
www.ninamooncie.com

8



### Fiona Morrison and Anne Barrell

9

87 Willingdon Road  
BN21 1TZ

### Fishing Boats and Shooting Stars.

A selling exhibition of work  
by two artists inspired by  
coast and landscape  
working in individual and  
complementary styles.

### Paintings - Fiona Morrison Ceramics - Anne Barrell

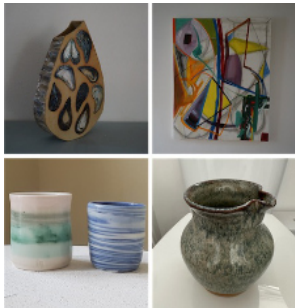
annebarrell.co.uk  
Instagram@fionamorrisonart

Cards and prints also  
available

Open all weekend

Fri/Sat/Sun/Mon 11 - 4





**Lucy and Photis Charalambou  
Sue Bardwell-Wheat  
Caroline O'Grady**

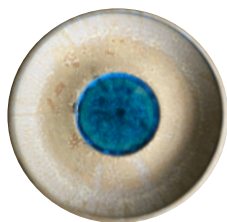
10

25 Carew Road BN21 2JN  
www.lucy-creations.com  
www.photischaralambou-art.com

Three ceramicists and an abstract painter invite you to come and see their vibrant, imaginative artwork and well crafted original ceramics.

Open 8<sup>th</sup>- 10<sup>th</sup> April Sat/Sun/Mon  
11am-4pm

# THE | BIG | HOUSE



**Open all  
Easter  
weekend,  
Fri - Mon  
11am-5pm**

49 Prideaux Rd  
BN21 2NE

11

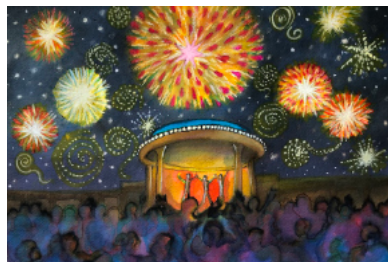
01323 731792

E: johnthepot\_helen@lineone.net

There's a warm welcome at The Big House where John and Helen Warren and guest exhibitors will be showing a variety of ceramics, glass, jewellery, paintings and textiles.



Supporting the Wayfinder Woman Trust



**Emma Mason Gallery**

21 Lushington Lane, BN21 4LJ  
www.emmamason.co.uk

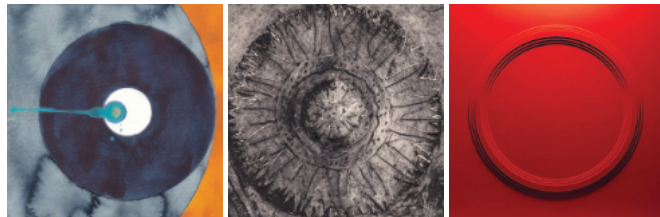
12

01323 727545

**Owls, Horses, Puffins & Partridges**  
A love of wildlife and nature seen through the work of printmaker James T.A. Osborne (1907-79)

Original prints, cards & gifts.

Open Friday 7<sup>th</sup> & Saturday 8<sup>th</sup>  
10am-4pm. Also open the following  
Friday 14<sup>th</sup> and Saturday 15<sup>th</sup>



**Paul Bartholomew**

13

3 Commercial Road BN21 3XE

Paul Bartholomew will be opening his house to showcase his collection of work by contemporary artists from the South East, visiting varying modes of expression and creative practice.

He will be opening 8<sup>th</sup>, 9<sup>th</sup> and 10<sup>th</sup> April and the following week 15<sup>th</sup> and 16<sup>th</sup> April. 11am - 4pm.

7<sup>th</sup> April. Private viewing 6pm until 9pm



**Deliciously Gorgeous Cafe**

12 Cornfield Road, BN21 4QE  
01323 749794 www.deliciouslygorgeous.co.uk

A fully licensed cafe on two levels, with pavement seating. Showcasing the work of East Sussex artists and photographers in it's own art gallery.

Open 8.30am - 4.30pm Mon - Sun  
Now open until 10pm on Saturday's

14



## The Lighthouse Gallery

15

19 Cornfield Terrace  
BN214NS.

A warm welcome awaits at The Lighthouse Gallery on Cornfield Terrace with coffee and cake to enjoy. Discover a treasure trove of unique handmade work from more than 25 local artists and makers, including original artwork, prints, ceramics, woodturning, fused glass, textiles and jewellery. Gift vouchers available.

Open Friday 7th  
and Sat 8th

10-4pm



## Gallery@42 and Pennie's Pet Portraits

42 South Street BN21 4XB

16

Email: [galleriat42@gmail.com](mailto:galleriat42@gmail.com)  
[www.penniespetportraits.co.uk](http://www.penniespetportraits.co.uk)  
[www.rilexier.com](http://www.rilexier.com)

### Pennie Cunliffe-Lister & Renee Rilexie

Welcome to Gallery@42

Pennie has had rave reviews for her Pet Portraits which capture that special bond between pet and owner. Pennie paints pets to commission only.

Renee's art is inspired by sound, colour and the human condition.

Paintings, sculptures, prints and cards available for sale.

Open House Hours: 11 - 4 pm daily.



## EASTBOURNE FRAMING CENTRE



**300+ FRAMES**  
**50+ MOUNT COLOURS**  
REGULARLY FRAMING FOR ARTISTS

Open Monday to Saturday 9am - 5pm



8-10 TERMINUS ROAD | EASTBOURNE | BN21 3LP | 01323 647822  
[INFO@EASTBOURNEFRAMINGCENTRE.CO.UK](mailto:INFO@EASTBOURNEFRAMINGCENTRE.CO.UK)

17



## Sheena Bourn

18

Flat 1, 59 Silverdale Rd, BN20 7AY  
Follow on Facebook: Sheena Bourn  
07931 945187

Sheena is showing her colourful painted canvases of Eastbourne Pier, both large and small, alongside studies of Holywell's rock pools and waterflows.

Open all Easter weekend. 11am - 4pm

There is easy parking and wheelchair access.



## Adrian Chappell

19

Flat 1, 28 Silverdale Rd, BN20 7EY  
**07905 008902**

Drawings, prints and paintings inspired by his recent novel "An Honourable Betrayal", set in Yemen and Niger, plus prints from Bankside, London.

Open Fri 7<sup>th</sup> & Sat 8<sup>th</sup> April, 11am-5pm

[www.curiouscurators.org.uk](http://www.curiouscurators.org.uk)  
Instagram @curiouscurators



## Gillian Toft

Garden Studio, 1 Granville Road  
BN20 7EB

07737 542371

20

[art@gilliantoft.co.uk](mailto:art@gilliantoft.co.uk)

For reasonably priced, original artworks, including local scenes, wildlife and more in various styles and media, please come visit.

Also showing at the Garden Studio

## Christina Frewing

Hand made porcelain and white stoneware ceramics to be used and enjoyed everyday.

07925 888930

Instagram page with links to online gallery. Search Christina Frewing.

Open all weekend inc Good Friday & Easter Monday 11am - 4pm

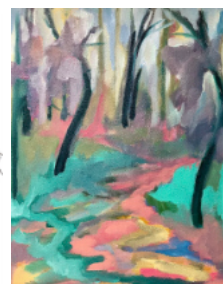
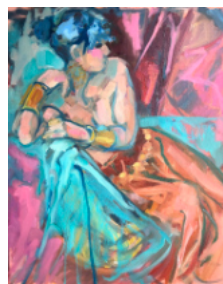


# EXHIBITION

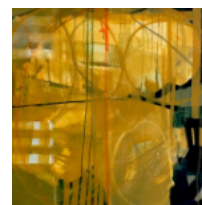
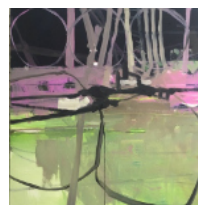
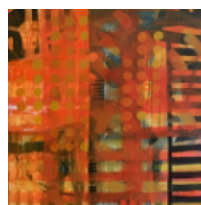
## Lindy Dunbar and Julian Sutherland-Beatson At The Birley Centre

21

### LINDY DUNBAR



### JULIAN SUTHERLAND-BEATSON

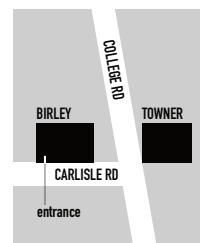


**Open weekends during April, 11am - 4pm** Free admission

Apr 7, 8, & 10 (Closed Easter Sunday) 15/16, 22/23, 29/30.

The Birley Centre, 4 Carlisle Rd, Eastbourne BN21 4EF

The entrance is approx 50 metres from Towner on Carlisle Rd.





## Gio Martin

22

Come and view Gio's new collection of textured figurative drawings, paintings and ceramics inspired by the sea and sea swimming; and Romalie's beautiful flora and fauna linocuts.

**The Garage Gallery** on Manifold Road will be open from 11 till 5, Friday, Saturday, Sunday and Monday.



## Heidi Westgate, Frances Macgregor, Kerry Caffyn and Joanna Kinchin

23

36 Manifold Rd BN22 8EH  
[www.francesjoymacgregor.com](http://www.francesjoymacgregor.com)

Offering a warm welcome and an eclectic mix of original art works ranging from mystic surrealist painting, mixed media seascapes, portraits, figurative painting and glass jewellery.

Open Saturday 8<sup>th</sup> and Sunday 9<sup>th</sup>  
11.00am - 5.00 pm



## Cosy Cottage

1 Church Cottage, Warrior Square,  
BN22 7DD

**Angela Elliott:** Milliner

@elliottsmillinery  
[www.elliottsmillinery.co.uk](http://www.elliottsmillinery.co.uk)

**Amanda Cardoso:** Printmaker

@amanda\_cardoso\_printmaker  
[www.amandacardosoprintmaker.com](http://www.amandacardosoprintmaker.com)

Hats, prints and jukebox jive  
Open Friday and Saturday 11-4



*Coming Soon*



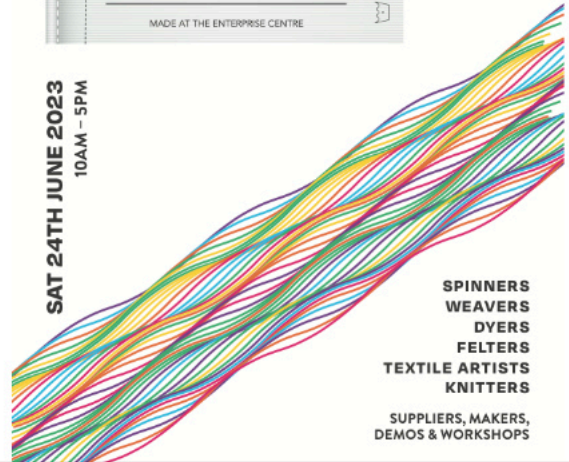
# Adorn

Contemporary Jewellery Show

03 JUNE 2023 10am - 5pm



SAT 24TH JUNE 2023  
10AM - 5PM



SPINNERS  
WEAVERS  
DYERS  
FELTERS  
TEXTILE ARTISTS  
KNITTERS

SUPPLIERS, MAKERS,  
DEMOS & WORKSHOPS

25



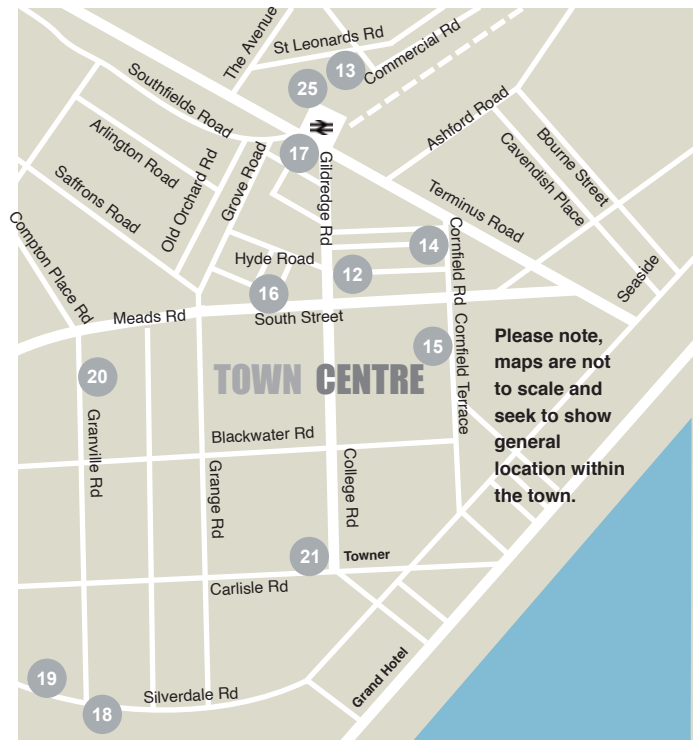
**ENTERPRISE**  
INDEPENDENT SHOPPING

Enterprise Shopping Centre, Station Parade,  
Eastbourne, BN21 1BD

[www.enterprise-centre.org](http://www.enterprise-centre.org)



# NOTES



Coming soon

**Elda Abramson Exhibition**

## Life Lines: A Life in Art

### Paintings & Tapestries

April 29th to June 29th

### Gallery North

70 High Street

Hailsham

BN27 1AX

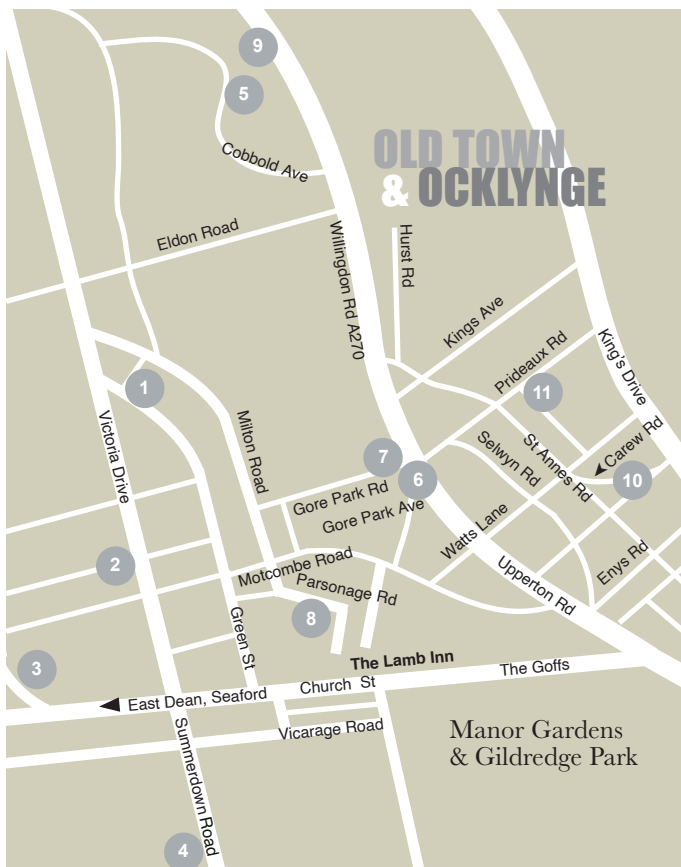
artgallerynorth@gmail.com

### Saturday April 29 12 noon

Thereafter, Tuesday and Wednesday  
10am - 1pm

Thursday, Friday and Saturday  
10am - 4pm

If you would like to visit outside these  
times contact Jenny West 07578  
023667 to make an appointment.



EASTBOURNE ARTISTS

## OPEN HOUSES & STUDIOS

EASTER WEEKEND. APRIL 7, 8, 9 & 10

# 2023

