

# EASTBOURNE ARTISTS christmas

OPEN HOUSES & STUDIOS

NOVEMBER 19/20 & 26/27

CERAMICS



CHRISTMAS GIFTS



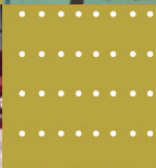
PAINTINGS



TEXTILES



PRINTMAKING



GLASS



MILLINERY



JEWELLERY



AND MUCH MORE



# Over forty artists and makers showing and selling their work from their homes and studios around the town over two weekends.

**F**or more than a decade the artists and makers of our lovely seaside town have opened their homes and studios to the public, and here we are again!

For those of you that have never visited an Open House or studio, well, you're in for a treat! Over the years the artists and makers of Eastbourne have become very good at showing their work to interested visitors. This brochure gives you an overview of the wealth and breadth of artistic talent around the town.

Perhaps you are seeking a painting, print, photograph or drawing for your home. Maybe you can't resist beautiful ceramics, jewellery and textiles? You'll find plenty to take your fancy. On a more practical note, most Open Houses are open both weekends, typically from 11am-4pm but do check details as some open earlier or stay open later. Some open on one day or weekend only.

As Covid is still with us please be respectful of any suggestions made at particular venues.

We hope you have a great time visiting the artists around the town and this Christmas, may your days be merry and bright!

Whilst every effort is made to ensure that all information in this publication is correct, responsibility cannot be taken for any errors or omissions. Individual artists and studios are responsible for all display, sales etc at their own particular venues. The publishers of this publication have no responsibility in the artist's domain. Any queries, please call 07768 387980. Cover images left to right from the top, line by line. Fiona Morrison, Jennie Lathbury at Blue Whale Pottery, Helena Markson at The Emma Mason Gallery, Angie Elliott at Cosy Christmas Cottage, Rachael Trewin at Liv & Flo, David Rice, Anthony McIntosh at The Big House.



## Brenda & the Tuesday Potters

30 Northiam Road, BN20 8LP

Unique hand made ceramic creations: bowls, vases, pots, sculptures, wall art, mobiles and jewellery.

Pocket goddesses of empowerment.

Spiritual artwork and books.

1

Open both weekends 11am - 4pm



## David Rice & Nina Mooncie

23 Parsonage Road, BN21 1JF

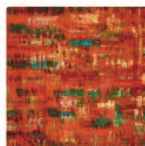
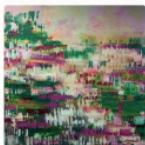
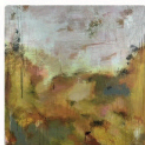
David is showing paintings of summer and winter. Nina has cards, prints, badges, tea towels and cushions of her illustrations.

[www.davidriceart.com](http://www.davidriceart.com)

[www.ninamooncie.com](http://www.ninamooncie.com)

2

Open both weekends 11am-4pm



## Vicki Disney

3

1 Chamberlain Rd BN21 1RU

1 Chamberlain Road studio will be filled to the brim with contemporary art, velvet cushions, Christmas decorations, cards & healing crystals.

Do pop in.

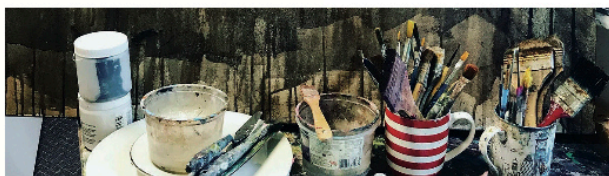


~ vicki\_disney

~ Akitsuholistics

[www.vickidisney.art](http://www.vickidisney.art)

Open from 11-4.30 both weekends.





## Fiona Morrison and Anne Barrell

87 Willingdon Rd BN211TZ

**Painting: Fiona Morrison**  
**Ceramics: Anne Barrell**

4

[annebarrell.co.uk](http://annebarrell.co.uk)

[Instagram@fionamorrisonart](https://www.instagram.com/fionamorrisonart)



A selling exhibition of work by two artists inspired by coast and landscape working in individual and complementary styles.

Cards and prints also available.

Open both weekends.

10am-4pm.



## Christine Munro, family and friends

5

38 Cobbold Avenue BN21 1UZ

New paintings, stained glass, greetings cards, affordable Christmas presents, refreshments and a warm welcome to all.

Open both weekends 11am - 5pm



## 123 Green St BN21 1RS

6

Contact [#clairegravestextiles](https://www.instagram.com/clairegravestextiles)

Textile Artist Claire Graves invites you to her colourful home to browse through affordable gift ideas. Floral artist Sarah Addems and guest ceramic artist Anne Castano will be joining me. We look forward to seeing you soon.

Open both weekends 11am - 5pm  
Refreshments available





## The Little House

7

72 Hurst Road, BN212PW

Original artworks and demonstrations by,  
Justine Munson, Porcelain  
Philippa Hayes, Textiles  
Anna Tuggey, Printmaking  
Alison Sutton, Beadmaker

Open both weekends 10am-4pm



## The Big House

8

49 Prideaux Rd BN21 2NE

**John and Helen Warren** invite you to see ceramics, paintings, glass, jewellery and more with -

**Barbara Butterworth**

**Sue Clarke**

**Lynda Lindfield**

**Tania Long**

**Anthony McIntosh**

**Roz Nathan**

**Julie Snowball**

**Oriana Stefa**



Supporting The Wayfinder Woman Trust



## Samantha Tuffnell & Jennifer Moore

9

Top Flat, 6 Gore Park Rd, BN21 1TQ

Come and meet the artists and their work inspired by local seascapes, landscapes and British birds. Affordable gifts, prints and cards for Christmas!

Open both weekends 11am-4pm

[www.instagram.com/samanthatuffnellartist](https://www.instagram.com/samanthatuffnellartist)  
[www.jennifermooreartist.com](https://www.jennifermooreartist.com)



## Rachael Trewin

10

1 Brampton Villas, Watts Lane,  
BN21 1NS  
rachaeltrewin@yahoo.co.uk

Home of LIV & FLO, with guest makers Lynn Watt and Elise Ceramics. Showing a selection of both sculptural and functional ceramics, unique vintage kimono home accessories & beautiful festive gifts.

Open Nov 26/27 10-4 pm



## Blue Whale Pottery 07960 764955

40 Summerdown Road BN20 8DR

Beautiful, useful & affordable ceramics

Jennie Lathbury - Porcelain  
Karen Peters - Parian  
Claire Shoosmith - Slipware  
Gary Edwards - Stoneware  
Valeria Marinaci - Earthenware

11

Instagram: blue\_whale\_pottery

Open both weekends 10am-4pm



15% discount for  
all Eastbourne  
Artists and  
Photographers.  
Valid til 31<sup>st</sup> May  
2023

13

**YOUR CANVAS PRINTING SPECIALISTS**  
Large format prints (plus Giclee prints  
for artists) on a range of papers and  
canvas plus T-shirts & sweatshirts

11 Lismore Road, Eastbourne BN21 3BA [www.bigartstudio.co.uk](http://www.bigartstudio.co.uk)



## Julian Sutherland-Beatson

The Studio, 3 Dittons Rd BN21 1DN

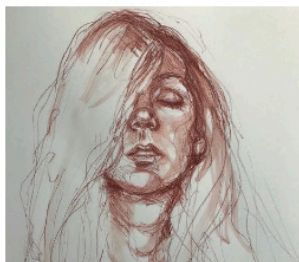
A warm welcome awaits in Dittons Road. Showing new landscapes and city paintings alongside larger 'graphic arrangements'.

Julian has had work in the RA Summer exhibition on 3 occasions and has 2 paintings in the House of Lords permanent collection. He has also exhibited at Glyndebourne for the past 12 years and recently had 2 paintings in the Sussex Contemporary at the i360 in Brighton. Archive quality prints and cards also available.

[www.sutherlandbeatson.com](http://www.sutherlandbeatson.com)

12

Open both weekends 11am-4pm



## Alice Hesketh & Sophie Wright

11 Cornfield Lane (Studio 2) BN21 4NX

Come along and see some new artwork from Alice Hesketh and Sophie Wright at our studio in Cornfield Lane. Alice will also be selling prints from selected paintings and will be available to provide information on the portrait classes that she teaches at the studio.

[www.aliceheskethart.co.uk](http://www.aliceheskethart.co.uk)  
Instagram: @aliceheskethart

**Please note we are only open the first weekend. 11-5pm**

14



## Emma Mason Gallery

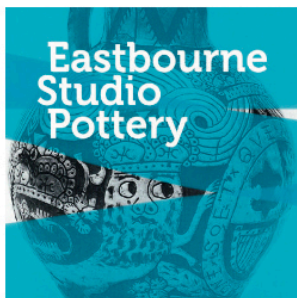
21 Lushington Lane, BN21 4LJ  
[www.emmamason.co.uk](http://www.emmamason.co.uk)

01323 727545

Visit our gallery in central Eastbourne for beautiful prints by artists from the 1950s onwards, also books and gifts.

Open both weekends 11am - 4pm

15



## Eastbourne Studio Pottery

Eastbourne Studio Pottery CIC  
137-139 Seaside Rd, BN21 3PG

Open-access ceramic studios  
We'll be running taster workshops for adults and children from 10 till 4 hand-building and throwing on the wheel, more information and booking on our website.

Ceramics made by our students, members and tutors for sale  
Come down and chat with artists at work in our members' studio.

[www.eastbournestudiopottery.com](http://www.eastbournestudiopottery.com)  
[www.instagram.com/eastbournestudiopottery/](https://www.instagram.com/eastbournestudiopottery/)

**We are open on Saturday 19th only from 10am to 5pm**

16



## Gio Martin and Romalie Martin Bullman

71 Firle Road BN22 8EQ  
(Garage is in Manifold Rd, behind 71 Firle Rd)

After a summer of very colourful paintings Gio is returning to more subtle colours and lots of textured paintings. Linocuts and drawings are also available to view.

Romalie Martin Bullman will be exhibiting her bold Linocut prints on vintage papers and maps.

All welcome to visit us at The Garage Gallery on Manifold Road.

@giomartinartist (Instagram and Facebook)  
@romalielily\_art (Instagram)

We will be open from 11 till 3 on both weekends.

17







**Cosy Christmas Cottage**  
1 Church Cottage  
Warrior Square BN22 7DD

18

Angela Elliott: @elliottsmillinery

Elizabeth Doak:  
@elizabethbetsydoak Photographer

Amanda Cardoso  
@amanda\_cardoso\_printmaker

Hats, Photographs, Lino Prints,  
Festivities and Jukebox Jive.

Open both weekends 11am - 4pm



**Heidi Westgate and  
Frances Macgregor**

19

36 Manifold Rd BN22 8EH  
heidiwestgate504@gmail.com  
www.francesjoymacgregor.co.uk

Offering a warm welcome and an  
eclectic selection of artworks  
including original paintings,  
glasswork and collage, with  
inspiration ranging from Sussex  
seascapes to mystic surrealism.

Open both weekends  
11am - 4.30 pm



**The Lighthouse Gallery** 19 Cornfield Terrace, BN21 4NS.

20

A warm Christmas welcome awaits at The Lighthouse Gallery on  
Cornfield Terrace. A treasure trove of art and artisan gifts featuring  
unique handmade work from more than 25 local artists and makers,  
including paintings, prints, ceramics, wood, fused glass, textiles,  
silver jewellery and more. Gift vouchers available.

Open Tues to Sat 10-4pm, and Sun 20/27 November 12-4pm.  
Coffee and Christmas refreshments available. 07748 354879



**Adrian Chappell** 07905 008902

Flat 1, 28 Silverdale Rd BN20 7EY

A vibrant selection of high quality giclée prints and collages depicting historical and contemporary scenes.

**Open Saturday 26th and Sunday 27th November only 11am-5pm**

[www.curiouscurators.org.uk](http://www.curiouscurators.org.uk)  
[adrianchappell47@gmail.com](mailto:adrianchappell47@gmail.com)

21



**Gillian Toft**

Garden Studio, 1 Granville Road  
 BN20 7EB 07737 542371  
[art@gilliantoft.co.uk](mailto:art@gilliantoft.co.uk)

22

For reasonably priced, original artworks, including local scenes, wildlife and more in various styles and media, please come visit.

Open both weekends 11am-4pm



**Sussex Pottery** 01323 720849

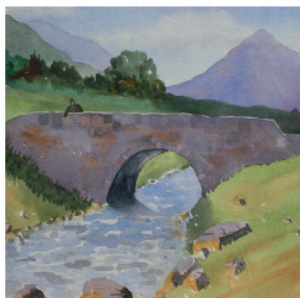
5 Holywell Close, Meads  
 BN207RX

23

[susieramsaysmith@gmail.com](mailto:susieramsaysmith@gmail.com)

Susie creates contemporary Sussex Pottery from wild, weald clay, when fired it reveals wonderful iron flashes and textures in the crafts for homes or gardens.

Open both weekends 10-4 daily



**Gavin Rendall**

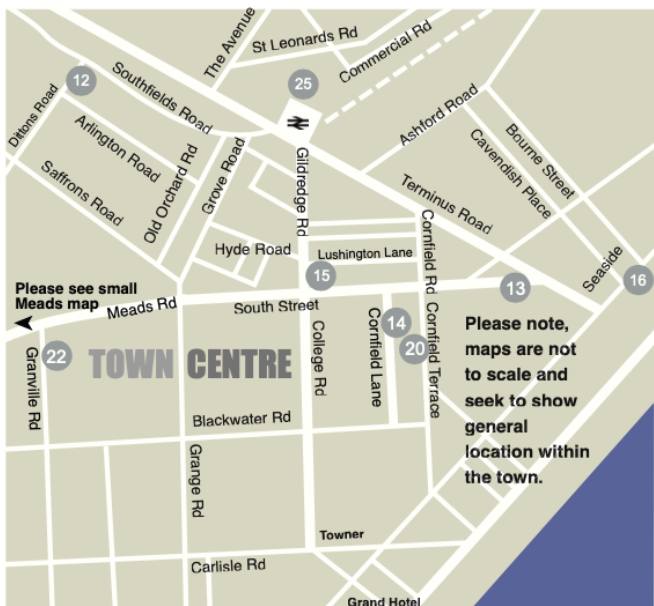
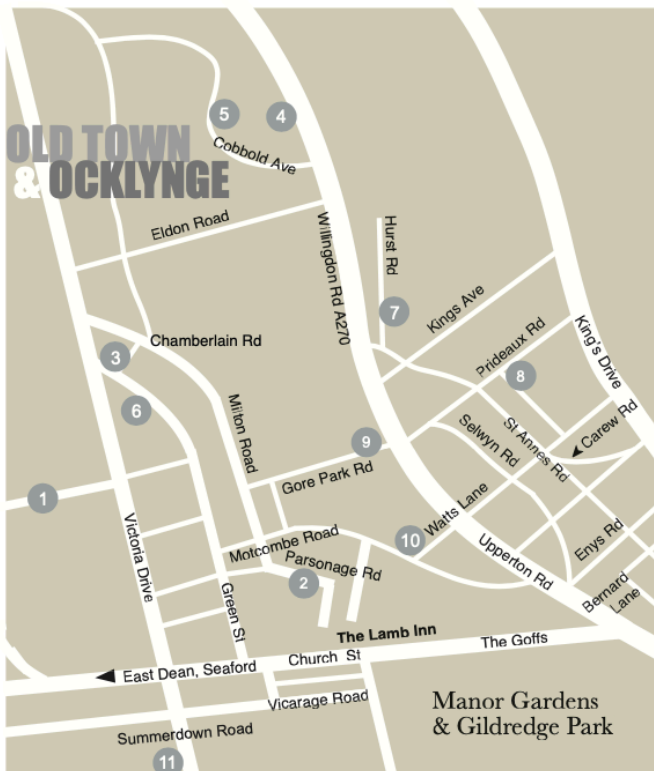
Stanton Prior Lodge, 69 Darley Rd,  
 Meads BN20 7UH

[cathbutcher@live.co.uk](mailto:cathbutcher@live.co.uk)  
[www.facebook.com/ThirstyBrushes](http://www.facebook.com/ThirstyBrushes)

Gavin specialises in watercolour, with many local scenes and landscapes from around the world. He taught on Cunard ships – trips that inspired his work.

Open both weekends 12-4pm

24





Please note, maps are NOT to scale.





# THE SUSSEX CRAFT AND Design CHRISTMAS FAIR

SATURDAY 3RD DECEMBER  
10AM - 5PM  
& SUNDAY 4TH DECEMBER  
10AM - 4PM

Free Entry

ENTERPRISE  
- SHOPPING CENTRE -

[www.enterprise-centre.org](http://www.enterprise-centre.org)