

christmas

OPEN
HOUSES &
STUDIOS

DEC 1/2 & DEC 8/9 2018

OVER 40 ARTISTS AND MAKERS

SHOWING AND SELLING THEIR

WORK FROM THEIR HOMES

AND STUDIOS AROUND THE

TOWN OVER TWO WEEKENDS.

"IT'S CHRISTMAS IN THE HEART THAT
PUTS CHRISTMAS IN THE AIR."

Another 'end of year' celebration and another Christmas Open Houses event in Eastbourne! Over 40 artists and makers opening their homes and studios to the public. Perhaps you are seeking a painting, print, photograph or drawing for a special seasonal gift. Maybe you can't resist beautiful ceramics, jewellery and textiles. You'll be certain to find much of interest.

On a practical note, most artists are open over both weekends from 11 in the morning to 5 in the afternoon, though it's advisable to check carefully as some open slightly earlier (or close later). Just a few are open for one weekend only. It's always best to take cash with you, though most artists will take cheques with a card. Some artists take credit cards and direct bank transfers can always be arranged. Paypal can be useful too.

You'll find plenty this year to take your fancy, so have a great time exploring the creative hot spots of our wonderful seaside town.

While every effort has been made to ensure that all information in producing this publication is correct, responsibility cannot be taken for any errors & omissions.

Individual artists and studios are responsible for all display, sales etc at their own particular venues. The publishers of this publication have no responsibility in the artist's domain.

Cover image: © Jane Sutherland (exhibiting at The Makery in The Enterprise Centre during November).

If you have any questions about any artists in this brochure, directions or opening times, please call Julian on 07768 387980

Arts in Mind

Towner Art Gallery
College Rd, Eastbourne BN21 4JJ

Arts in Mind is an artist collective who develop creative approaches to support their mental health. They've been working in partnership with Towner, meeting weekly at the gallery, for over seven years.

Open both weekends 11am to 4pm.

1



towner
art gallery

**Women In Black And Blue With A Bit Of Orange**

New paintings from Lorraine Hughes

DC3, 1-5 Seaside, Eastbourne BN22 7NA

1/2 & 8/9 December 11-5

26



Vicki Disney Studio

1 Chamberlain Rd, Old Town,
Eastbourne BN21 1RU
www.vickidisney.com Instagram vicki_disney

Filled with 'Big Sky' paintings, Christmas decorations & beautiful makings as well as a huge amount of Christmas cheer .

Open both weekends 11-4

2



James Heighway

62 Milton Road, Old Town, Eastbourne
BN21 1SS
www.heighwayart.co.uk 07731 949692

Scenes of East Sussex depicted in a colourful, Art Deco-like style, using acrylic paint. Original pieces as well as cards and prints on show.

Opening times and any other information
10am-4pm each day

3



Mary Shemza

37 Milton Road Eastbourne BN21 1SH
www.marykatrinashemza.com
01323 642877

Internationally collected painter, calligrapher and sculptor. Inspiration: organic, calligraphic. Approach: intuitive. Outlook: celebratory. Price: affordable.

Open both weekends 11-4

4



Steve Brookman

3, Milton Road, Eastbourne BN21 1SG
stevebrookman@live.co.uk

Steve is pleased to welcome visitors to his house once again this year to view his new work.

Open both weekends 10am - 4pm.

5



Abi & Davey's Home Studio

111 Green Street, Eastbourne, BN21 1RW
www.abimyersart.com 07738 420210

Impactful contemporary abstract paintings, utilising spray paint and mixed media. Original cards and unusual gifts - plus live music, in this cosy, colourful artists' home.

Open both weekends 11-5 (live music 2-5)

6



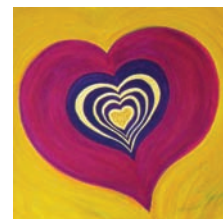
Brenda Bruzon

30 Northiam Rd, Eastbourne BN20 8LP
www.brendabruzon.wordpress.com
07906 314436

Soul-inspired original acrylic artworks, prints, art cards and 'Trumpeting Joy!' elephant cushions. Swedish spiced gingerbread and mulled cider. A warm welcome to all.

Sat 1st: 10-12.30 Sun 2nd, Sat 8th and Sun 9th: 10-4

7



Hazel Horobin

55 Victoria Drive, Eastbourne BN20 8JU
hazelhorobin@gmail.com 01323 304539

Exhibiting artists: **Donna Southern** - Painter; **Angie Elliott** - Elliott's Millinery and hat making demonstrations, **Karen Peters** - Ceramics and silk screen printing, plus other artists.

8

Open second weekend only 8/9 Dec. 11-4 Tea and coffee available.

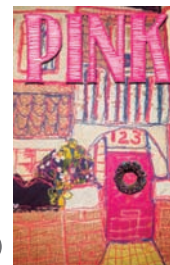
Pink

123 Green Street, Old Town,
Eastbourne BN21 1RS
skewiff@aol.com

Claire and friends welcome you to browse a selection of affordable gifts to include Textiles, Illustration, Typography, as well as Christmas wreaths and cards.

Open both weekends 11-5

9



The Christmas Cracker

19 Bradford St, Old Town, Eastbourne
BN21 1HY www.claredales.com

The Christmas Cracker welcomes you! Original prints, textiles, hand-printed stationery, Christmas gifts and decorations, even a 3D High Street.

Demonstrations each day. Open both weekends 10am-6pm

10



Victoria Rachel Brook

17 Greys Road Eastbourne BN20 8AY
victoria-brook@hotmail.co.uk 07941 885293

Award winning artist specialising in children's illustration. Original watercolours and limited edition prints, greetings cards, gifts and festive nibbles in abundance.

Open first weekend only. 10-5 both days.

11



Alison Gilbert

57 Selwyn Road
Eastbourne, BN21 2LR
alison.j.gilbert@gmail.com
www.alisonjgilbert.co.uk
07952 626689

Excited to show lots of new work this Christmas. Colourful expressive paintings and mixed media, ceramic wall art, stitched paper collage and textiles. Small decorative gifts, prints and cards also available.

Check out my Instagram
and/or Facebook pages
@alisonjgilbertArt

Open both weekends. 11- 5 each day



12

Penny & Bernard

71 Willingdon Road Eastbourne,
BN21 1TR penberntextile@gmail.com

A collection of fabric samples: Dyed, painted and printed by us for many film & stage productions (mostly costume), since the late '70s when we first set up our textile studio.

Open both weekends 10-5



13

Motley

70 Eastbourne Rd , Willingdon BN20 9NS
Facebook: Ruth Backshall Artist & Maker

We're back with an upcycling extravaganza! Art made with found treasures & vintage pieces. Photos, lino prints, stamped cutlery, jewellery & more. Mulled cider & special mince pies!

Open both weekends 11-5

Parking in layby or at The Triangle



14

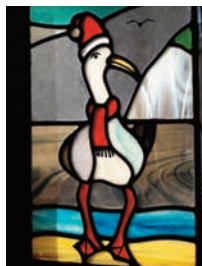
Please note new address!

The Festive Glass House and guests

25 King's Drive, Eastbourne BN21 2NX
ruth@clearsky.eclipse.co.uk

Beautiful Stained glass by local professional designer and maker RUTH FISHER
Ceramics by SARAH HARBOURNE
Paintings by FIONA MORRISSON
also wonderful handmade Christmas gifts and cards.

Open 10.30 - 4 **1st & 2nd December only**



15

THE BIG HOUSE

49 Prideaux Rd Eastbourne BN21 2NE
johnthepot_helen@lineone.net
01323 731792

There is a warm welcome at the Big House with exhibitors showing a variety of spectacular work including:

Barbara Butterworth: ceramics

Sam Fanaroff: copperwork

Linda Lawrence: soaps

Lynda Lindfield: jewellery

Anthony McIntosh: glass

Rose Pill: paintings

Alan Rimmer: prints and cards

Susan Santolini: light boxes and prints

Andy Smith: woodwork

Chrissy Smith: textiles

Julie Snowball: ceramics

Sonya Tatham: paintings

John Warren: ceramics

Helen Warren: paintings and textiles



Opening both weekends 10-4 each day

Supporting Wayfinder Woman
as our charity this year.

WayfinderWoman
inspiring women inspiring other women



16

**Enterprise
Shopping Centre
Station Parade,
Eastbourne
BN21 1BD**



Permanent
co operative gallery
showcasing the works of
12 member artists plus
guests.

Original artwork, prints,
ceramics, cast and fused
glass, textiles, jewellery
and furniture. Gift
vouchers and framing
service available.

**Open every day
throughout the year
Mon-Sat 9am-5pm
Sun 10am-4pm**

17



"BRINGING ARTISTS TOGETHER"

**THE SUSSEX CHRISTMAS
CRAFT & DESIGN
FAIR**

SAT 1 DEC, 10am-5pm & SUN 2 DEC 10am-4pm

ENTERPRISE
SHOPPING CENTRE

Station Parade, Eastbourne BN21 1BD www.enterprise-centre.org



Ceramics On Show at The Clay Workshop

10am - 4pm December 1st & 2nd, 8th & 9th
grahammatthews.pots@gmail.com
07962 367152

18

Tableware, Slipware, Sculpture, Raku and Decorative



Unit 4, Commercial Mews North, Commercial Rd, BN21 3XF

Studio ELEVEN



Studio 11 will be open both Saturdays of Open Houses weekends, with working demonstrations from students and friends of the studio. Christine Chester and Roz Nathan (Tutors and Artists) will be showing current work and will be available to talk about the courses they run from the studio. There will also be gift ideas and refreshments. Entrance to the studio is through automatic doors at the very end of Wharf Road opposite the platforms of the Railway Station. Look out for the balloons.

Open Saturday 1st & 8th December only 11am - 5pm

The Old Printworks 20 Wharf Rd Eastbourne BN21 3AW 07941 399479
www.studio11eb.co.uk
studio11eastbourne@yahoo.com

19

EXHIBITION



The Eastbourne Group of Artists presents

Secret Spaces Favourite Places

20



3 November – 16 December
Saturdays and Sundays only
11am – 4pm

Birley Centre
Carlisle Rd
BN21 4EF

Free Entry

David and Friends

46 Anderida Road, Lower Willingdon
BN22 0PX pwhinton@icloud.com

We hope you can join us for our second showing in the Open Houses exhibition. We are displaying works in watercolour, pastels, acrylics and oils.

Open both weekends 11-5
Level access.



21



49A Grove Road, Eastbourne BN21 4TX
viv@printersplayhouse.com www.printersplayhouse.com
01323 301333

Printers Playhouse: exhibiting artwork by Lucy Dean, Jodi Jones and Cath Stonard, selling contemporary paintings, textiles, collages, prints and gifts.
www.lucydeanartist.co.uk

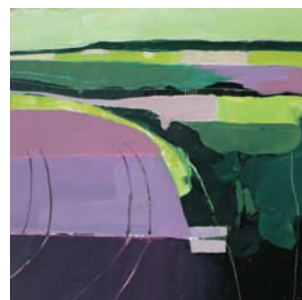
Resident chef Dan, of Bit a Vita, will be serving tasty, fresh, wholesome food too. Printers Playhouse: where local artists, actors and musicians meet, socialise, create new work, develop new skills and showcase their talents.



Join us for our fabulous Community Xmas production "The Snow Queen" 20th - 23rd December.

Open both Saturdays 11.30-5
Printers bar will be open from 5pm until 11pm

22



Julian Sutherland-Beatson & Elda Abramson

The Studio
3 Dittons Rd, Eastbourne
BN21 1DN 07768 387980
jsb@pavilion.co.uk

23

RA summer show, House of Lords and Glyndebourne exhibitor showing a collection of rural and urban landscapes (plus limited edition prints)

Also showing a selection of ink paintings by Elda Abramson.

Open both weekends 11-4





Showcasing local talent from West and East Sussex

DC1 Gallery & Cafe:
67-69 Seaside Road, Eastbourne, BN21 3PL
devonshirecollective.co.uk

DC1 - Devonshire Made Exhibition

Showcasing local talent from East and West Sussex
Open: 1st, 2nd, 8th and 9th December with the
Devonshire Made exhibition.
From 11AM - 5PM
67 - 69 Seaside Rd, BN21 3PL

DC2 - Open Studios (Screen Print and

Pottery Rooms and Artist Studios) Art for sale.

Open: 1st, 2nd, 8th and 9th December
From 11am - 5pm 137 - 139 Seaside Rd, BN21 3PG

DC3 Christmas Fair

DC Members Art for sale, plus Ma Velus Art Cafe,
Kids friendly arts and crafts activities, plus festive
refreshments are available

Open: Saturday 1st December 11am - 5pm

DC Member Lorraine Hughes at DC3
Presents Women in Black And Blue With A Bit Of Orange
On 1st, 2nd, 8th & 9th Dec 11am-5pm
1-5 Seaside, Eastbourne BN22 7NA

DC1 - DC Members Show

Theme : After Dark

Open : Tuesday 11th December - Saturday 5th January

For more information, see www.devonshirecollective.co.uk

